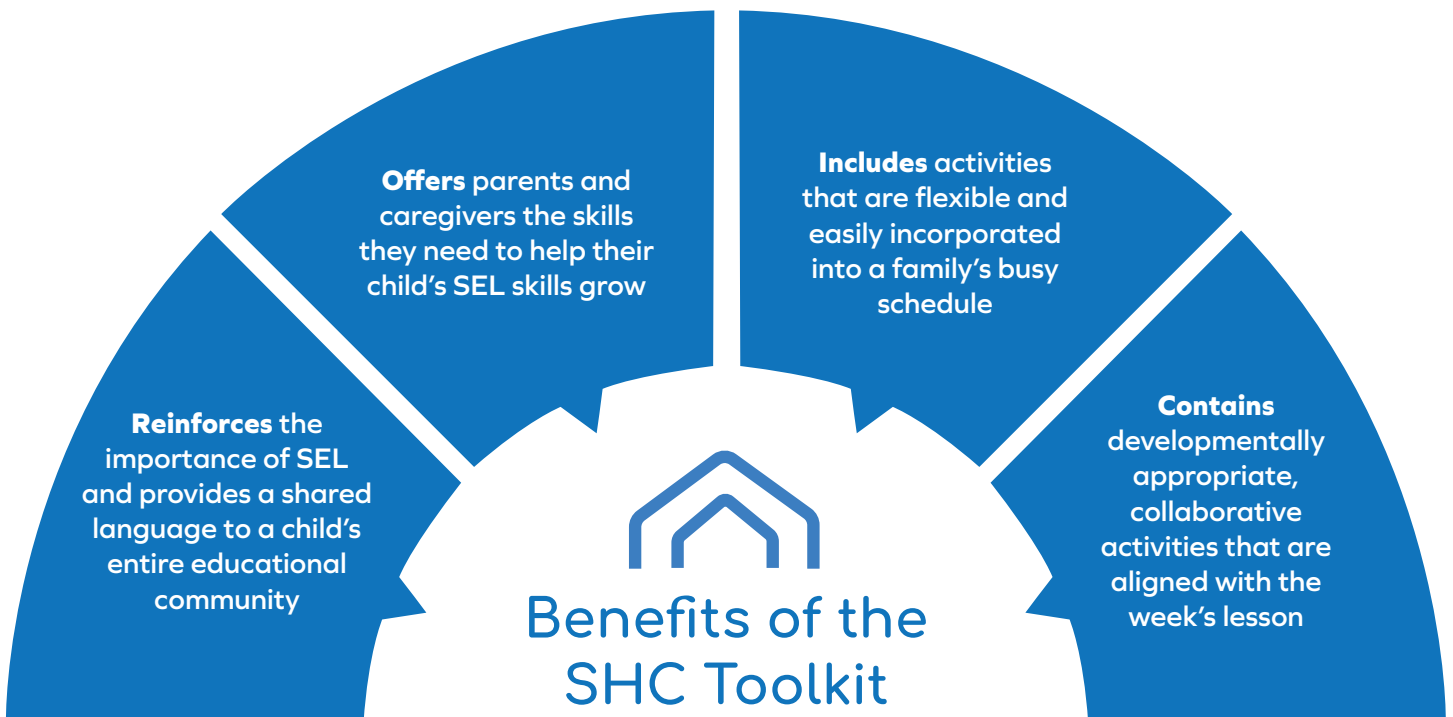


# School-to-Home Connection

By building a strong bridge between school and home, Fly Five promotes family engagement through the **School-to-Home Connection (SHC) Toolkit**. Research indicates that social and emotional learning starts at home, as parents, caregivers, and families are children's first models of behavior and social interaction. The SHC Toolkit serves as a protective factor by fostering positive relationships with adults while building SEL competence and resilience within a child's educational community. The SHC Toolkit contains a newsletter and developmentally appropriate collaborative activities that are aligned with the week's SEL lesson. Each toolkit provides five engaging activities for families to practice social and emotional skills at home and in their community.

**"We encourage parents to use the School-to-Home Connection, to make sure that they have a shared vocabulary to enter into conversations with their kids in a way that is surprising to the child."**

— Jill Brackett,  
Fly Five Teacher



The **SHC Toolkit** contains a newsletter and developmentally appropriate collaborative activities that are aligned with the week's SEL lesson. Each toolkit provides five engaging activities for families to practice social and emotional skills at home and in their community.



### Dinner Discussion:

Engaging prompts that will spark a discussion between parents/caregivers and children about the competency and skill they are learning that week



### Nighttime Reflections

Options for journaling, sketching, or discussing that allow for deep reflection about the children's SEL skills



### Art Activity:

Exciting, creative ideas to turn an SEL lesson into a hands-on masterpiece



### Community Connection:

Activities that provide unique opportunities for SEL growth and encourage children and families to take their learning to their larger community



### SEL Saturday:

Active and thought-provoking opportunities for continued SEL engagement with friends family, and members of the community; children will demonstrate their social and emotional skills in a big way

